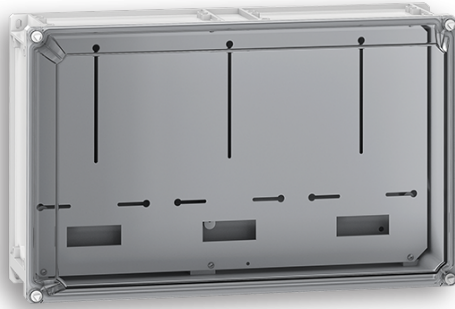


## DATASHEET

00145174

### CCT F/ 3 METERS SPH/3PH ENCL W630



<b>Dimensions</b>	630x398x225
<b>WxHxD (mm)</b>	
<b>Locking System</b>	Triangular plastic screw
<b>Color</b>	Grey - RAL 7035
<b>Tariff Code</b>	85371099
<b>Gross Weight (Kg)</b>	6.5
<b>Volume (m<sup>3</sup>)</b>	0.066625

<b>Observations</b>	This product is supplied exclusively as an integral part of an equipped and tested set, ensuring compliance with applicable standards.
---------------------	--

### Materials

<b>Enclosure</b>	Press polyester box (Fiberglass reinforced)
------------------	---

### Protection and Security

<b>Insulation Class</b>	Class II Insulation
<b>IP Protection Degree</b>	43
<b>IK Protection Degree</b>	09
<b>GWT</b>	960°C
<b>Static Load</b>	200kg/m <sup>3</sup>
<b>Installation Temperature</b>	Mín: -5°C Máx: 40°C

### Electrical Features

<b>Ue</b>	230V/400V~
<b>Ui</b>	500V
<b>degree of pollution</b>	3
<b>Frequency</b>	50Hz
<b>Icc (kA)</b>	10kA

### Standardizing Documentation

<b>Standards</b>	EN IEC 61439-2
<b>Directive</b>	2014/35/EU
	DIT-C14-140/N
<b>Regulations</b>	RTIEBT

**Nota:**The image may not correspond to the product code shown. Please refer to the technical specifications.